



SONOLINE G40 Ultrasound System  
More performance within your reach

**SIEMENS**  
medical

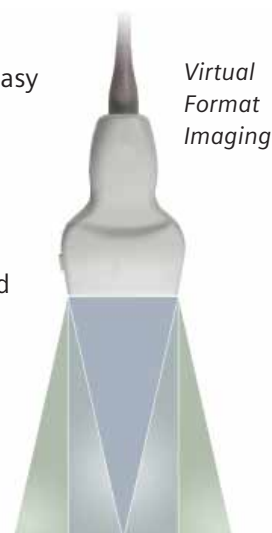
# SONOLINE G40 Ultrasound System

## Comprehensive capabilities in a compact size

The new SONOLINE G40™ ultrasound system brings the benefits of Siemens core technology migration to an entirely new level of diagnostic performance and workflow efficiency, all in an ultra-portable system that meets your clinical needs. With a comprehensive range of features including color Doppler and pulsed-wave Doppler capabilities, the G40 system sets a new performance standard in the world of compact, mobile, color Doppler ultrasound systems.

- Migration of Siemens all-digital signal processing technology ensures best-in-class image quality for higher diagnostic confidence
- State-of-the-art beamforming architecture advances clinical capabilities with SynAps™ synthetic aperture technology for improved penetration and focus, parallel B-mode and color signal processing and phased array imaging functionality
- AutoColor technology provides single-step color Doppler optimization and autotrace functionality offers easy acquisition and quantification of color and Doppler studies

- Patented Hanafy lens acoustic technology enables clear differentiation of near-field structures and reduces far-field beam spread
- Imaging frequencies from 2–13 MHz provide superb support for a wide range of clinical applications
- Virtual Format Imaging increases anatomic information with a touch of a button, providing a selection of linear, trapezoidal and steered 2D imaging formats
- Open system architecture enables easy integration of advanced capabilities including phase inversion Tissue Harmonic Imaging (THI) and 3D imaging
- Comprehensive DIMAQ-IP integrated workstation allows instantaneous storage, review and quantification of complete ultrasound studies



# Perf

*The G40 system easily and consistently meets the challenge of technically difficult-to-image patients.*



The G40 system combines comprehensive, best-in-class imaging performance with sophisticated workflow advancements. From general imaging applications through cardiac imaging, the G40 system sets a new standard for clinical capabilities in the world of ultra-portable ultrasound.

Performance

# Color Doppler is on the move

The intelligent, intuitive design of the ultra-portable G40 system means that its leading performance capabilities go wherever the need is—offering comprehensive diagnostic ultrasound exams to more patients in less time, in all clinical environments.

- Compact, lightweight system with small footprint provides virtually effortless mobility and easy micropositioning in tight workspaces
- Intuitive user interface and familiar SONOLINE control panel layout advance workflow efficiency and clinical throughput
- Compact system design combined with color Doppler capability supports portable examinations without compromise
- TGO™ tissue grayscale optimization technology provides instantaneous, one-button image optimization

- Integrated documentation peripherals and onboard storage conveniently offer easy access to accessories needed to complete a comprehensive exam
- DIMAQ-IP integrated workstation supports capture and review of entire clinical studies in any environment, along with exportation of exams to CD
- Plug-and-play connectivity solutions allow easy integration into DICOM-enabled networks and PC-based workstations for efficient export of exam data
- Modern system design with integrated cable management and three transducer ports provides excellent protection during transport



*Lightweight, compact and mobile, the G40 system helps you easily bring new clinical capabilities to more patients in less time.*



## The clinical capabilities go farther

The G40 system uniquely fulfills the increasing need for a highly ergonomic, performance-driven, mobile color Doppler ultrasound system, bringing more clinical capabilities within reach for practices and clinics of every size and caseload. When it comes to value and performance, the G40 system is in a class by itself.

- Value-leading, next-generation color Doppler system offers a flexible configuration that evolves with your needs
- Best-in-class image quality, for greater diagnostic confidence
- Phased array technology expands clinical capabilities to include cardiac imaging and small-footprint abdominal imaging
- Extensive, customizable Measurement and Report packages enhance diagnostic analysis
- Ergonomic control panel and lightweight transducers are designed to help reduce repetitive-stress injuries
- Intuitive user interface and logical control panel layout enable shorter exam times with no compromise to patient care

# Value





*From performance capabilities to system ergonomics, the G40 system brings best-in-class diagnostic ultrasound to your daily clinical practice.*



*The G40 system provides comprehensive clinical capabilities in virtually any clinical environment.*



# Portability



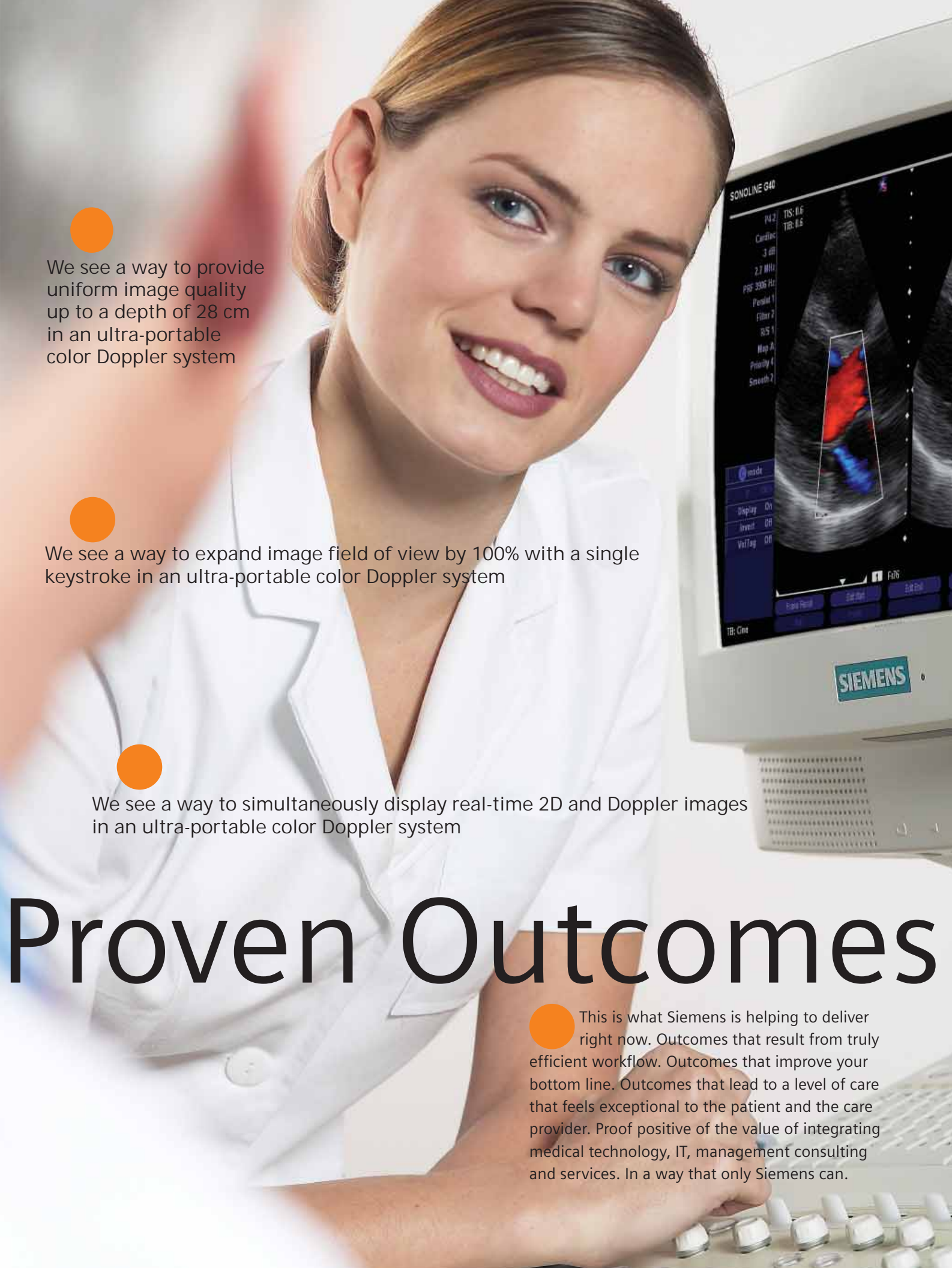
# Get the most from your investment is what **Life** is all about

Life is the unique customer care solution from Siemens that surrounds you with programs and support that enable the continuous development of your skills, productivity, and technology.

The G40 system offers a wide range of clinical capabilities that promote a higher level of performance and diagnostic confidence. Life, our customer care solution, ensures the integrity of your investment and protects against obsolescence with a continuous upgrade path through the Evolve program.

Our flexible service plans offer a wide range of UPTIME Services, from preventive maintenance to full service coverage to biomed partnership programs; continuous software updates and upgrades; transducer protection; workflow improvements; clinical and applications training; and access to networked customer communities. For more information on the new G40 system and our customized service plans, please contact your Siemens ultrasound representative.





We see a way to provide uniform image quality up to a depth of 28 cm in an ultra-portable color Doppler system

We see a way to expand image field of view by 100% with a single keystroke in an ultra-portable color Doppler system

We see a way to simultaneously display real-time 2D and Doppler images in an ultra-portable color Doppler system

# Proven Outcomes

This is what Siemens is helping to deliver right now. Outcomes that result from truly efficient workflow. Outcomes that improve your bottom line. Outcomes that lead to a level of care that feels exceptional to the patient and the care provider. Proof positive of the value of integrating medical technology, IT, management consulting and services. In a way that only Siemens can.



**The Physician's Resource**  
for Medical Equipment, Inc.

---

Sales and Service of Cardiology and Surgical Equipment and Supplies

Siemens **Medical**  
**Solutions** that help